

Rectangle



Model	Ci5160RL-THX	Ci3160RL-THX	Ci4100QL
Series	R Series	R Series	Q Series
Nominal impedance	4Ω	4Ω	4Ω
Sensitivity (2.83V/1m)	90dB	90dB	89dB
Frequency response (±6dB) open-backed	40Hz - 28kHz	45Hz - 28kHz	55Hz - 28kHz
Crossover frequency	300Hz, 2.4kHz	340Hz, 2.5kHz	2.2kHz
Drive units	LF MF HF	LF MF HF	LF MF HF
	4 x 160mm (6.5in.) 160mm (6.5in.) 25mm (1in.) Uni-Q	2 x 160mm (6.5in.) 160mm (6.5in.) 25mm (1in.) Uni-Q	3 x 100mm (4in.) 100mm (4in.) 19mm (0.75in.) Uni-Q
Recommended amplifier power	40 - 250 W	30 - 180 W	10 - 150 W
Product external dimensions (H x W x D)	1070 x 230 x 105.7 mm (42.13 x 9.06 x 4.16 in.)	680 x 230 x 105.7 mm (26.77 x 9.06 x 4.16 in.)	490 x 128 x 81 mm (19.29 x 5.04 x 3.19 in.)
Cut-out dimensions (H x W)	1052 x 209 mm (41.42 x 8.23 in.)	660 x 209 mm (25.98 x 8.23 in.)	476 x 114 mm (18.74 x 4.49 in.)
Net Weight	19kg (41.89lbs.)	11.7kg (25.79lbs.)	3kg (6.61lbs)
Mounting depth from surface	99mm (3.9in.)	99mm (3.9in.)	76mm (3in.)
Optional rough in frame	RIF5160L	RIF3160L	RIF4100L
Optional rear enclosure	-	-	-



Model	Ci3160RLb-THX	Ci4100QLb
Series	R Series	Q Series
Nominal impedance	4Ω	4Ω
Sensitivity (2.83V/1m)	92dB	90dB
Frequency response (±6dB) open-backed	20Hz - 140Hz	35Hz - 120Hz
Crossover frequency	-	-
Drive units	LF	LF
	3 x 160mm (6.5in.)	4 x 100mm (4in.)
Required amplifier	KEF KASA500	KEF KASA500
Product external dimensions (H x W x D)	680 x 230 x 96 mm (26.77 x 9.06 x 3.78 in.)	490 x 128 x 81 mm (19.29 x 5.04 x 3.19 in.)
Cut-out dimensions (H x W)	660 x 209 mm (25.98 x 8.23 in.)	476 x 114 mm (18.74 x 4.49 in.)
Net Weight	10.9kg (24.11lbs.)	3kg (6.61lbs)
Mounting depth from surface	90mm (3.54in.)	76mm (3in.)
Optional rough in frame	RIF3160L	RIF4100L
Optional rear enclosure	-	-

Rectangle



Model	Ci200QL	Ci160QL	Ci200CL
Series	Q Series	Q Series	C Series
Nominal impedance	8Ω	8Ω	8Ω
Sensitivity (2.83V/1m)	90dB	89dB	90dB
Frequency response (±6dB) open-backed	35Hz - 34kHz	38Hz - 34kHz	45Hz - 20kHz
Crossover frequency	2.5kHz	3.0kHz	2.8kHz
Drive units	LF 200mm (8in.) HF 25mm (1in.) Uni-Q	160mm (6.5in.) 19mm (0.75in.) Uni-Q	200mm (8in.) 25mm (1in.)
Recommended amplifier power	10 - 150 W	10 - 125 W	10 - 125 W
Product external dimensions (H x W x D)	369 x 273 x 106 mm (14.53 x 10.75 x 4.17 in.)	303 x 223 x 97.5 mm (11.93 x 8.78 x 3.84 in.)	369 x 273 x 102 mm (14.53 x 10.75 x 4.02 in.)
Cut-out dimensions (H x W)	334 x 238 mm (13.15 x 9.37 in.)	274 x 194 mm (10.79 x 7.64 in.)	334 x 238 mm (13.15 x 9.37 in.)
Net Weight	2.6kg (5.77lbs.)	2.05kg (4.51lbs.)	2.0kg (4.43lbs.)
Mounting depth from surface	99.8mm (3.93in.)	91mm (3.58in.)	95.9mm (3.78in.)
Optional rough in frame	RIF200L	RIF160L	RIF200L
Optional rear enclosure	RNC200L	RNC160L	RNC200L



Model	Ci160CL	Ci160SL
Series	C Series	Classic Series
Nominal impedance	8Ω	8Ω
Sensitivity (2.83V/1m)	89dB	89dB
Frequency response (±6dB) open-backed	52Hz - 20kHz	52Hz - 20kHz
Crossover frequency	3.4kHz	3.4kHz
Drive units	LF 160mm (6.5in.) HF 19mm (0.75in.)	160mm (6.5in.) 19mm (0.75in.)
Recommended amplifier power	10 - 100 W	10 - 100 W
Product external dimensions (H x W x D)	303 x 223 x 91 mm (11.93 x 8.78 x 3.58 in.)	300 x 220 x 92 mm (11.81 x 8.66 x 3.62 in.)
Cut-out dimensions (H x W)	274 x 194 mm (10.79 x 7.64 in.)	274 x 194 mm (10.79 x 7.64 in.)
Net Weight	1.87kg (4.12lbs.)	1.5kg (3.3lbs.)
Mounting depth from surface	84.5mm (3.33in.)	85.8mm (3.38in.)
Optional rough in frame	RIF160L	RIF160L
Optional rear enclosure	RNC160L	RNC160L

Square



Model	Ci200QS	Ci160QS	Ci130QS	Ci100QS
Series	Q Series	Q Series	Q Series	Q Series / Soundlight
Nominal impedance	8Ω	8Ω	8Ω	4Ω
Sensitivity (2.83V/1m)	90dB	89dB	87dB	88dB
Frequency response (±6dB) open-backed	35Hz - 34kHz	38Hz - 34kHz	45Hz - 34kHz	80Hz - 27kHz
Crossover frequency	2.5kHz	3.0kHz	3.8kHz	3kHz
Drive units	LF 200mm (8in.) HF 25mm (1in.) Uni-Q	160mm (6.5in.) 19mm (0.75in.) Uni-Q	130mm (5.25in.) 19mm (0.75in.) Uni-Q	100mm (4in.) 19mm (0.75in.) Uni-Q
Recommended amplifier power	10 - 150 W	10 - 125 W	10 - 100 W	10 - 50 W
Product external dimensions (H x W x D)	273 x 273 x 106 mm (10.75 x 10.75 x 4.17 in.)	223 x 223 x 97 mm (8.78 x 8.78 x 3.82 in.)	184 x 184 x 84 mm (7.24 x 7.24 x 3.31 in.)	127 x 127 x 76 mm (5.0 x 5.0 x 2.99 in.)
Cut-out dimensions (H x W)	238 x 238 mm (9.37 x 9.37 in.)	194 x 194 mm (7.64 x 7.64 in.)	158 x 158 mm (6.22 x 6.22 in.)	112 x 112 mm (4.41 x 4.41 in.)
Net Weight	2.4kg (5.3lbs.)	1.88kg (4.14lbs.)	1.4kg (3.1lbs.)	0.67kg (1.48lbs.)
Mounting depth from surface	99.8mm (3.93in.)	91mm (3.58in.)	77.9mm (3.07in.)	72mm (2.83in.)
Optional rough in frame	RIF200S	RIF160S	RIF130S	RIF100S
Optional rear enclosure	RNC200S	RNC160S	RNC130S	RNC100S



Model	Ci160CS	Ci160CSds	Ci130CS	Ci160SS
Series	C Series	C Series	C Series	Classic Series
Nominal impedance	8Ω	8Ω	8Ω	8Ω
Sensitivity (2.83V/1m)	89dB	91dB	87dB	89dB
Frequency response (±6dB) open-backed	52Hz - 20kHz	50Hz - 20kHz	52Hz - 20kHz	52Hz - 20kHz
Crossover frequency	3.4kHz	3.2kHz	4kHz	3.4kHz
Drive units	LF 160mm (6.5in.) HF 19mm (0.75in.)	160mm (6.5in.) 2 x 19mm (0.75in.)	130mm (5.25in.) 19mm (0.75in.)	160mm (6.5in.) 19mm (0.75in.)
Recommended amplifier power	10 - 100 W	10 - 80 W	10 - 80 W	10 - 100 W
Product external dimensions (H x W x D)	223 x 223 x 90.5 mm (8.78 x 8.78 x 3.56 in.)	223 x 223 x 90.5 mm (8.78 x 8.78 x 3.56 in.)	184 x 184 x 83 mm (7.24 x 7.24 x 3.3 in.)	220 x 220 x 91 mm (8.66 x 8.66 x 3.58 in.)
Cut-out dimensions (H x W)	194 x 194 mm (7.64 x 7.64 in.)	194 x 194 mm (7.64 x 7.64 in.)	158 x 158 mm (6.22 x 6.22 in.)	194 x 194 mm (7.64 x 7.64 in.)
Net Weight	1.70kg (3.74lbs.)	1.80kg (4.0lbs.)	1.35kg (3.0lbs.)	1.4kg (3.1lbs.)
Mounting depth from surface	84.5mm (3.33in.)	84.5mm (3.33in.)	77.1mm (3.03in.)	85.1mm (3.35in.)
Optional rough in frame	RIF160S	RIF160S	RIF130S	RIF160S
Optional rear enclosure	RNC160S	RNC160S	RNC130S	RNC160S

Round



Model	Ci200RR-THX		Ci160TR		Ci200QR	
Series	R Series		T Series		Q Series	
Nominal impedance	4Ω		8Ω		8Ω	
Sensitivity (2.83V/1m)	90dB		87dB		90dB	
Frequency response (±6dB) open-backed	33Hz - 28kHz		110Hz - 24kHz		35Hz - 34kHz	
Crossover frequency	2.2kHz		1.7kHz		2.2kHz	
Drive units	LF	200mm (8in.)	HF	115mm (4.5in.) dual layer	LF	200mm (8.0in.)
	HF	38mm (1.5in.) Uni-Q		25mm (1in.)	HF	25mm (1in.) Uni-Q
Recommended amplifier power	10 - 190 W		10 - 100 W		10 - 150 W	
Product external dimensions	Diameter Ø	290mm (11.42in.)	Diameter Ø	234.6mm (9.24in.)	Diameter Ø	289.6mm (11.4in.)
	Depth	132.6mm (5.22in.)	Depth	40mm (1.57in.)	Depth	109.8mm (4.32in.)
Cut-out dimensions	Diameter Ø	238mm (9.37in.)	Diameter Ø	196mm (7.71in.)	Diameter Ø	240mm (9.45in.)
	Net Weight	3.6kg (7.94lbs.)	Net Weight	1kg (2.2lbs.)	Net Weight	-
Mounting depth from surface	126.5mm (4.98in.)		<36mm (1 ⁷ / ₁₆ in.)		103.3mm (4.07in.)	
Optional rough in frame	RIF200R		RIF160R		RIF200R	
Optional rear enclosure	-		RNC160R		RNC200R	



Model	Ci160QR		Ci130QR		Ci160SR	
Series	Q Series		Q Series		Classic Series	
Nominal impedance	8Ω		8Ω		8Ω	
Sensitivity (2.83V/1m)	89dB		87dB		89dB	
Frequency response (±6dB) open-backed	38Hz - 34kHz		45Hz - 34kHz		52Hz - 20kHz	
Crossover frequency	3.0kHz		3.8kHz		3.4kHz	
Drive units	LF	160mm (6.5in.)	HF	130mm (5.25in.)	LF	160mm (6.5in.)
	HF	19mm (0.75in.) Uni-Q		19mm (0.75in.) Uni-Q	HF	19mm (0.75in.)
Recommended amplifier power	10 - 125 W		10 - 100 W		10 - 100 W	
Product external dimensions	Diameter Ø	234.6mm (9.24in.)	Diameter Ø	193.4mm (7.61in.)	Diameter Ø	220mm (8.66in.)
	Depth	98mm (3.86in.)	Depth	83.3mm (3.28in.)	Depth	91mm (3.58 in.)
Cut-out dimensions	Diameter Ø	196mm (7.71 in.)	Diameter Ø	158mm (6.22in.)	Diameter Ø	196mm (7.71 in.)
	Net Weight	-	Net Weight	-	Net Weight	1.3kg (2.9lbs.)
Mounting depth from surface	91mm (3.58in.)		77.8mm (3.06in.)		84.5mm (3.33in.)	
Optional rough in frame	RIF160R		RIF130R		RIF160R	
Optional rear enclosure	RNC160R		RNC130R		RNC160R	

Round



Model		Ci200CR	Ci160CR	Ci160CRds
Series		C Series	C Series	C Series
Nominal impedance		8Ω	8Ω	8Ω
Sensitivity (2.83V/1m)		90dB	89dB	91dB
Frequency response (±6dB) open-backed		45Hz - 20kHz	52Hz - 20kHz	50Hz - 20kHz
Crossover frequency		2.8kHz	3.4kHz	3.2kHz
Drive units	LF	200mm (8.0in.)	160mm (6.5in.)	Dual voice coil: 160mm (6.5in.)
	HF	25mm (1.0in.)	19mm (0.75in.)	2 × 19mm (0.75in.)
Recommended amplifier power		10 - 125W	10 - 100 W	10 - 80 W
Product external dimensions	Diameter Ø	289.6mm (11.4in.)	234.6mm (9.24in.)	234.6mm (9.24in.)
	Depth	103.3mm (4.07in.)	93mm (3.66in.)	93mm (3.66in.)
Cut-out dimensions	Diameter Ø	240mm (9.45in.)	196mm (7.71in.)	196mm (7.71in.)
Mounting depth from surface		97.2mm (3.83in.)	86mm (3.36in.)	86mm (3.36in.)
Optional rough in frame		RIF200R	RIF160R	RIF160R
Optional rear enclosure		RNC200R	RNC160R	RNC160R



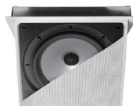
Model		Ci130CR	Ci50R
Series		C Series	C Series / Soundlight
Nominal impedance		8Ω	6Ω
Sensitivity (2.83V/1m)		87dB	82dB
Frequency response (±6dB) open-backed		52Hz - 20kHz	125Hz - 20kHz
Frequency response (±6dB) with back can / rear enclosure		-	170Hz - 20kHz
Crossover frequency		4kHz	-
Drive units	LF	130mm (5.25in.)	-
	MF	-	50mm (2.0in.)
	HF	19mm (0.75in.)	-
Recommended amplifier power		10 - 80 W	10 - 30 W
Product external dimensions	Diameter Ø	193.4mm (7.61in.)	80mm (3.15in.)
	Depth	83.5mm (3.29in.)	52mm (2.05in.)
Cut-out dimensions	Diameter Ø	158mm (6.22in.)	65mm (2.56in.)
Mounting depth from surface		78mm (3.07in.)	50mm (1.97in.)
Optional rough in frame		RIF130R	-
Optional rear enclosure		RNC130R	CI50 CAN

Commercial Round



Model		Ci160QCT**	Ci115QCT**	Ci110FCT**	Ci160ST**
Series		Q Series	Q Series	Classic Series	Classic Series
Nominal impedance		8Ω	8Ω	8Ω	4Ω
Sensitivity (2.83V/1m)		89dB	86dB	89dB	85dB
Frequency response (±6dB) with back can / rear enclosure		60Hz - 20kHz	70Hz - 20kHz	110Hz - 18kHz	60Hz - 130kHz
Crossover frequency		2.8kHz	2.3kHz	-	-
Drive units	LF	160mm (6.5in.)	115mm (4.5in.)	110mm (4.3in.)	160mm (6.5in.)
	HF	19mm (0.75in.) Uni-Q	19mm (0.75in.) Uni-Q	-	-
Recommended amplifier power		10 - 100 W	15 - 80 W	10 - 100 W	20 - 100 W
Product external dimensions	Diameter Ø	275mm (10.83in.)	220mm (8.66in.)	220mm (8.66in.)	275mm (10.83in.)
	Depth	188mm (7.40in.)	160mm (6.30in.)	110mm (4.33in.)	188mm (7.40in.)
Cut-out dimensions	Diameter Ø	240mm (9.45in.)	196mm (7.71in.)	196mm (7.71in.)	240mm (9.45in.)
Mounting depth from surface		185mm (7.28in.)	157mm (6.18in.)	107mm (4.21in.)	185mm (7.28in.)
Optional rough in frame		RIF200R	RIF160R	RIF160R	RIF200R

Motorised



Model		Ci3-80QT	Ci200.3QT	CiFDT	Ci100QR	Ci80.2QR	Soundlight system
Series		Q Series	Q Series	-	Q Series / Soundlight	Q Series / Soundlight	C Series / Soundlight
Nominal impedance		8Ω	8Ω	8Ω	4Ω	4Ω	4Ω
Sensitivity (2.83V/1m)		87dB	89dB	86dB	88dB	85dB	88dB
Frequency response (±6dB) open-backed		-	-	-	80Hz - 27kHz	100Hz - 27kHz	62Hz - 20kHz
Frequency response (±6dB) with back can / rear enclosure		87Hz - 30kHz	50Hz - 30kHz	80Hz - 20kHz	110Hz - 27kHz	130Hz - 27kHz	62Hz - 20kHz
Crossover frequency		300Hz, 3kHz	1.8kHz	180Hz	3kHz	3kHz	220Hz
Drive units	LF	2 x 75mm (3.0in.)	200mm (8.0in.)	130mm (5.25in.)	100mm (4.0in.)	80mm (3.15in.)	100mm (4.0in.)
	MF	75mm (3.0in.)	-	180 x 110 mm (7.0in. x 4.5in.)	-	-	4 x 50mm (2.0in.)
	HF	15mm (0.6in.) Uni-Q	25mm (1.0in.) Uni-Q	-	19mm (0.75in.) Uni-Q	15mm (0.6in.) Uni-Q	-
Recommended amplifier power		10 - 100 W	10 - 100 W	20 - 100 W	10 - 50 W	10 - 50 W	10 - 100 W
Product external dimensions (H x W x D)		128 x 377 x 125 mm (5.04 x 14.84 x 4.92 in.)	381 x 279 x 210 mm (15.0 x 10.98 x 8.27in.)	248 x 248 x 104 mm (9.76 x 9.76 x 4.09 in.)	127mm (5in.) 148mm (5.83in.)	103mm (4.06in.) 140mm (5.51in.)	Subwoofer unit: 350 x 180 x 104 mm
	Cut-out dimensions	With back can (H x W) / diameter Ø	112 x 354 mm (4.41 x 13.94 in.)	363 x 260 mm (14.29 x 10.24 in.)	233 x 220 mm (9.17 x 8.66in.)	118mm (4.65in.)	97mm (3.82in.)
Mounting depth from surface	With back can	-	-	-	145mm (5.71in.)	139mm (5.47in.)	-
	Without back can	120mm (4.72in.)	210mm (8.27in.)	102mm (4.02in.)	100mm (3.94in.)	80mm (3.15in.)	-
Optional rough in frame		-	-	-	RIF100R	RIF80R	-
Optional rear enclosure		-	-	-	RNC100R	RNC80R	-

** UL2043 and UL1480-5 approved

Not all models / finishes are available in all markets. Contact your local dealer for specific range details. KEF reserves the right, in line with continuing research and development, to amend or change specifications. E&OE.

Outdoor



Model		Ventura 6*	Ventura 5*	Ventura 4*
Nominal impedance		6Ω	6Ω	6Ω
Sensitivity (2.83V/1m)		90dB	89dB	88dB
Frequency response (±6dB) with back can / rear enclosure		54Hz - 20kHz	60Hz - 20kHz	75Hz - 20kHz
Crossover frequency		3kHz	3.8kHz	3.5kHz
Drive units	LF	160mm (6.5in.)	130mm (5.25in.)	115mm (4.5in.)
	HF	25mm (1in.)	25mm (1in.)	19mm (0.75in.)
Recommended amplifier power		10 - 125 W	10 - 100 W	10 - 80 W
Product external dimensions (H x W x D)	Cabinet only	300 x 226 x 219 mm (11.8 x 9 x 8.6 in.)	262 x 197 x 189 mm (10.3 x 7.75 x 7.4 in.)	231 x 172 x 173 mm (9 x 6.75 x 6.8 in.)
	With bracket and knobs	300 x 226 x 263.5 mm (11.8 x 9 x 10.375 in.)	262 x 197 x 235 mm (10.3 x 7.75 x 9.25 in.)	235 x 172 x 203.2 mm (9.25 x 6.75 x 8 in.)
Operating temperature range		-40°C to 70°C (-40°F to 158°F)	-40°C to 70°C (-40°F to 158°F)	-40°C to 70°C (-40°F to 158°F)



Model		Ci500AW
Nominal impedance		4Ω
Sensitivity (2.83V/1m)		87dB
Frequency response (±6dB) with back can / rear enclosure		60Hz - 20kHz
Crossover frequency		3kHz
Drive units	LF	130mm (5.25in.) LF
	MF	55 sq.cm ABR
	HF	25mm (1in.)
Recommended amplifier power		10 - 70 W
Product external dimensions (H x W x D)	Cabinet only	295 x 180 x 173 mm (11.6 x 7.08 x 6.81 in.)

*Independent test laboratory certified IP65

Not all models / finishes are available in all markets. Contact your local dealer for specific range details. KEF reserves the right, in line with continuing research and development, to amend or change specifications. E&OE.